



CAN10AHP DRAINAGE CHANNEL WITH PP GRATING –A15

BASIC FUNCTION:

- The drainage channel is designed to drain run-off water. In compliance with the EN1433 standard and the **CE** marking, it can be used in private areas for all building applications, the house surroundings, parks and gardens in class **A15**.

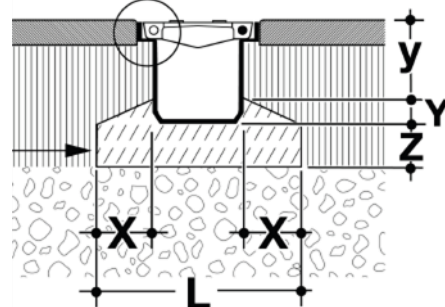
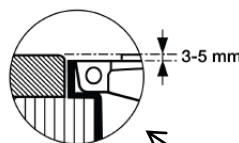
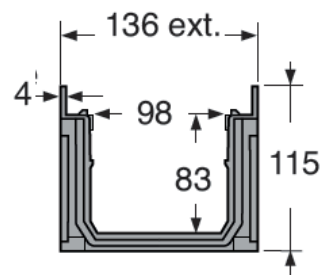


DESCRIPTION:

- This drainage channel is one-meter-long. It consists of :
 - a one-meter-long polypropylene body with a male/female interlocking system
 - a one-meter-long polypropylene grating, “heel” design

TECHNICAL CHARACTERISTICS:

- Class of resistance: A15
- Drainage surface : 397 cm²/ml
- Width of the grating openings : 7,4 mm
- Overall weight: 2 Kg



IMPLEMENTATION:

- Concrete quality: B20
- X = 60 mm; L = 250 mm; Z = 50 mm;
- Y = 30 mm; y = 90 mm

ACCESSORIES:

- The grid can be fixed with self-tapping screw ref. FIXCANN (sold by 12)
- The connection to the sewage can be achieved through the following PVC fittings:
 - Ø 100 End cap & inlet-outlet cap - NAT177N
 - Ø 110 End cap & inlet-outlet cap - NAV177N
 - Ø 100 Vertical and lateral outlets - STCAN
 - Ø 110 Vertical and lateral outlets - SVCAN



NAT177N



STCAN